

# cobas c 513

## The affected settings

### Affected important setting

Affected important settings	Affected time
Sample probe 1 (S1) Clot Detection disabled (only active on system running Glucose)	next operation starting from Standby

Table 1: Affected important setting

## Detectability

1. Date and Logon ID is not displayed in the red rectangles shown in figure 1.

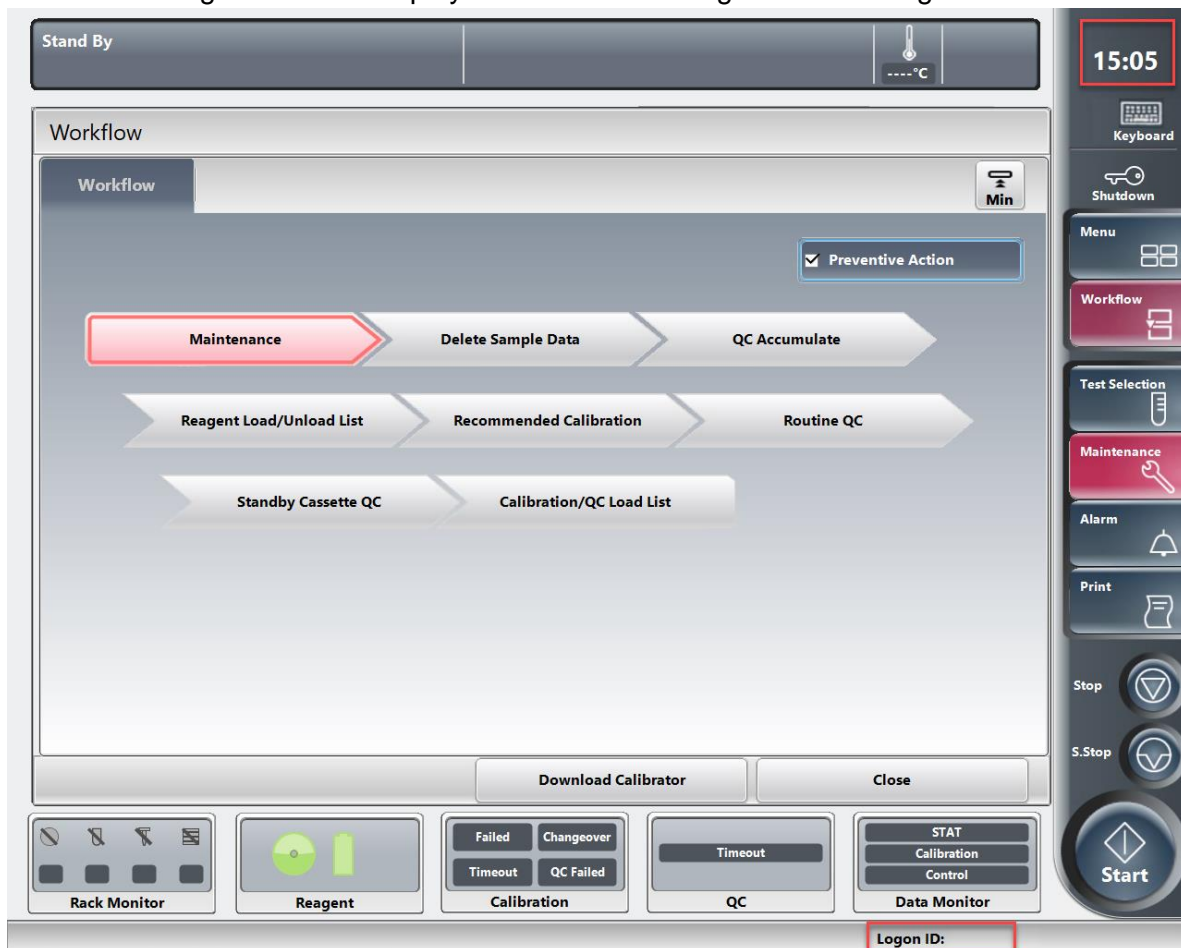


Figure 1: Date and Logon ID (in the red rectangles) is not displayed on the User Interface

## 2. System alarm 471-000001 without alarm name occurs.

Alarm Code	Module	Level	Alarm Name
471-000001	Analyzer Unit	Stop	

Figure 2: System alarm 471-000001 without alarm name

## Actions to be taken by the customer

Check if the date is displayed in the red rectangle shown in figure 1 before you click on the start button or at minimum on a daily basis. Whenever the date is not displayed, the software limitation has occurred on this instrument.

If the described software issue is present, stop the instrument by pressing the “Stop” button and call your Roche Service Representative.

For systems running in sequence mode, it is recommended to measure those samples again which have been measured in the time frame from the issue occurrence until the instrument has been stopped.

In order to determine the estimated time when the issue occurred, follow the steps as below.

1. Open the Print-History screen.
2. Search for the latest report which still displays the date in the red rectangle shown in figure 3. This is the estimated time before the issue occurred.

<b>Photometer Check</b>		Operator ID:	Operator	10/11/2014	11:48
Previous Data		Current Data			
Date	10/11/2014	10:13	Date	10/11/2014	11:48
340 nm	1000		340 nm	1000	
376 nm	500		376 nm	500	
415 nm	1000		415 nm	1000	
450 nm	500		450 nm	500	
480 nm	1000		480 nm	1000	
505 nm	500		505 nm	500	
546 nm	1000		546 nm	1000	
570 nm	500		570 nm	500	
600 nm	1000		600 nm	1000	
660 nm	500		660 nm	500	
700 nm	1000		700 nm	1000	
800 nm	500		800 nm	500	

Figure 3: Report in Print- History

For systems running in barcode mode, there is no need to rerun the barcoded samples which have been measured in the time frame from the issue occurrence until the instrument has been stopped, except the samples registered under Workplace- Test Selection-Barcode Read Error.